

## SAFETY PRECAUTIONS

**Failure to follow these instructions may result in an inaccurate dose.**

- **Autopen should be used only after consultation with your healthcare professional.**
- **3.0 ml cartridges from Novo Nordisk and sanofi should not be used with the 1 and 2 Unit 3.0 ml Autopen Classic (AN3810 & AN3800).**
- **Read and follow the manufacturer's instructions provided with your insulin cartridges. Please store your insulin at the temperature recommended by the manufacturer.**
- **Before each injection ensure that the Autopen contains the correct insulin type, as prescribed by your healthcare professional.**
- **Always ensure that Autopen has been primed in accordance with the instructions detailed in steps 6 and 7. Failure to follow the exact priming procedures could result in an inaccurate dose being delivered.**
- **The pen needle is single use and should be removed and safely disposed of immediately after each injection. If the pen needle is left on it may become blocked and affect the dose delivered.**
- **If the internal plunger is rewound incorrectly it can damage the Autopen. Please refer to step 12.**
- **To avoid potential damage to the Autopen, never dial a dose and push the release button without a cartridge in the cartridge holder.**
- **Never attempt to dial back the dose selector, as doing so may damage the Autopen and result in inaccurate dosing.**
- **Consult your healthcare professional should you encounter abnormal blood glucose levels.**
- **Never store the device with a pre set dose as this may damage the Autopen.**

## Instructions for use

Autopen is an easy-to-use, insulin injection pen, which provides a convenient and discreet method of delivering a preset dose of insulin from a 3.0 ml cartridge produced by Eli Lilly and Wockhardt UK.

**The 1 and 2 Unit 3.0 ml Autopen Classic (AN3810 & AN3800) must not be used with insulin cartridges manufactured by Novo Nordisk or sanofi.**

**PLEASE FOLLOW THESE STEP-BY-STEP INSTRUCTIONS CAREFULLY BEFORE USING THE AUTOPEN. DEVICE SHOULD NOT BE USED FOR ANY OTHER PURPOSE THAN THAT ADVISED BY YOUR HEALTHCARE PROFESSIONAL.**

Failure to follow these instructions may result in an inaccurate dose.

Please refer to the numbered pictures in the pull out section which accompany the following steps for use.

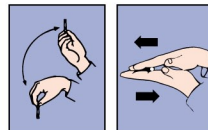
## COMPONENTS

- a. Dose selector
- b. Device body
- c. Release button
- d. Rewind collar
- e. Internal plunger
- f. Cartridge
- g. Cartridge holder
- h. Pen needle & protective caps
- i. Device cap
- j. Release button extension – clips onto release button for increased grip
- k. Dose selector adapter – fits onto dose selector for easier dialling

## LOADING A CARTRIDGE

1. Remove the device cap and unscrew the device body from the cartridge holder.
2. Check to ensure that the internal plunger is fully retracted (as in figure 2). If the internal plunger is extended, please refer to step 12.

**\*If using a cloudy insulin you will need to resuspend the insulin by turning the cartridge up and down and rolling it in the palm as per the cartridge instructions.**



3. Load the insulin cartridge into the cartridge holder with the metal cap in first.
4. Screw the cartridge holder and body firmly together.

## PRIMING

5. Attach a pen needle by firmly screwing it onto the threads at the end of the cartridge holder. Make sure that the pen needle is screwed on straight rather than at an angle. Remove the outer protective cap and needle cap from the pen needle.

**\*If the cartridge contains a cloudy insulin, turn the Autopen up and down at least 10 times as per cartridge instructions.**

6. It is important to “Prime” the Autopen before use to remove any air that may be inside the needle and cartridge. Dial 2 units on the dose selector.

7. Hold the Autopen vertically with the needle pointing up. Push and hold the release button towards the pen needle until the arrow ► on the Autopen body points to the starting line — on the dose selector. Repeat steps 6 & 7 until a drop of insulin appears at the needle tip.

The Autopen is now ready for use.

## INJECTING YOUR DOSE

8. Make sure the arrow ► on the Autopen body points to the starting line — on the dose selector.

The **1 Unit 3.0 ml Autopen** dose selector measures up to 21 units of insulin in 1 unit increments.

The **2 Unit 3.0 ml Autopen** dose selector measures up to 42 units of insulin in 2 unit increments.

Now dial up the number of units required.

Make sure before injecting that the arrow ► points towards the correct number of units on the dose selector.

Never attempt to 'dial back' the dose selector, as doing so may damage the Autopen and result in inaccurate dosing.

**If at any time the dose has been over dialled, we recommend that the incorrect dose is fully expelled into air and the required dose is redialled.**

9. Insert the needle (use the injection technique recommended by your healthcare professional), slide the release button towards the pen needle and hold down until the starting line on the dose selector returns to the arrow on the body ► —.

Count to 10 before removing the needle from the skin.

**If the dose selector stops before the starting line returns to the arrow, this indicates that you have not received a full dose. The dose selector will show the number of units that must be injected to complete the insulin dose.**

**Before making subsequent injections always make sure that a NEW pen needle is used, and the Autopen is primed (see steps 5, 6 & 7) and a drop of insulin is at the needle tip. If necessary repeat steps 6 & 7.**

## REMOVING THE NEEDLE

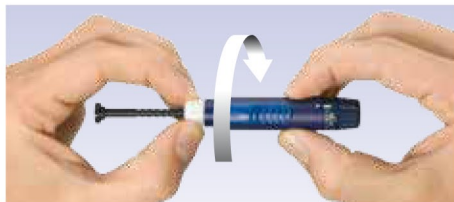
10. Reattach the larger white outer protective needle cap and remove the pen needle. Replace the device cap onto the Autopen.

Dispose of used pen needles carefully in accordance with the advice given by your healthcare professional or local regulations (e.g. suitable sharps container).

## CHANGING THE CARTRIDGE

11. To change the cartridge, unscrew and remove the pen needle. Unscrew the cartridge holder from the device body and remove the cartridge.

12. Rewind the internal plunger by holding the white rewind collar between the thumb and forefinger. Turn the Autopen body as shown below, until the internal plunger is fully retracted.



Then return to step 2 to load the next cartridge.

## STORAGE AND CLEANING

- The Autopen should always be stored or carried with the pen needle removed, and the device cap on. It should not be stored with a dialled dose.
- Cartridges can be carried in the Autopen or as spares according to the cartridge instructions.
- Please store your insulin at the temperature recommended by the insulin manufacturer.

- To clean the Autopen, wipe with a damp cloth.  
Do not immerse in water.
- Do not use any other solutions, eg. chemicals,  
alcohol wipes etc to clean your Autopen.

Recommended for use with:

**Unifine® Pentips®**  
**PEN NEEDLES**

Do not use if protective  
seal is damaged.



Please check contents of the package as listed on the outside of the box.

The Autopen® has been thoroughly tested and meets the dose accuracy requirements of ISO 11608-1.

Autopen®, Unifine® and Pentips® are registered trademarks of Owen Mumford Ltd.

Novo Nordisk® is a registered trademark of Novo Nordisk A/S.

Sanofi™ is a trademark of the sanofi group of companies.

Eli Lilly™ is a trademark of Eli Lilly.

Wockhardt® is a registered trademark of Wockhardt.

Last reviewed 05/11

Manufactured in the UK by



Owen Mumford Ltd.

Brook Hill, Woodstock, Oxford, OX20 1TU

T : 01993 812021 F : 01993 813466

[www.owenmumford.com](http://www.owenmumford.com)